



From a Whirlwind Semester, Looking Ahead to a New Year



Jennifer Summary, Ph.D.
Chair, Learning Assessment
Committee
Professor of Communication
Studies

Greetings to everyone! Welcome to the November edition of DataVersed, your newsletter for everything related to the FSW Learning Assessment Committee (LAC) and the Office of Assessment and Effectiveness (AASPIRE). As we reach the end of our 2022 semester, I hope everyone is hanging in there and doing well. This semester has been a whirlwind for everyone in our FSW community and SW Florida to say the least. The acts of kindness and heartwarming stories have been inspirational. Keep shining bright everyone!

As for this edition, we spotlight, Rushell Hopkins, one of our new LAC coordinators for computer technology. The spotlights are an interesting way to get to know our fellow colleagues a little better, so please kindly take the time to read our issue. Additionally, our other spotlight is on Jane Charles who provides valuable information, regarding the CREATIVE Capstone and the embedded librarian. We hope you enjoy!

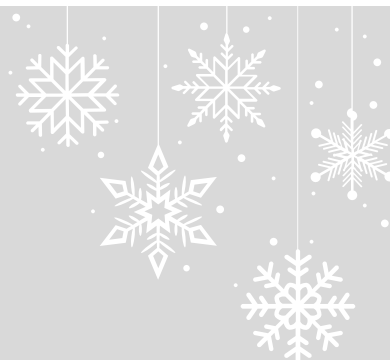
In closing, I hope all of you are looking forward to a much-needed break, celebrating the holidays with your friends and family. On behalf of the LAC and Team AASPIRE, we wish you a smooth end to your semester, a restful break, and a happy holiday season! We look forward to a brand-new year!

All the best,

Jennifer Summary,
PhD Communication Studies and LAC Chair

In this Issue of *DataVersed*

CREATIVE Capstone Librarian	2
LAC Coordinator Spotlight	3
Holidata Greeting	4
LAC Membership	5



CREATIVE Capstone and the Embedded Librarian

In case you haven't heard, librarians are embedding in IDS 2891 - CREATIVE Capstone, the newly minted General Education course that:

...constitutes a culminating General Education experience focused on applied transdisciplinary learning. Assisted by classmates, professors, and librarians, students will design and execute a significant project that addresses complex real world issues.

FSW Librarians are playing a major role in CREATIVE Capstone, which makes sense, given the mission of academic librarians: To teach students how to become information literate, or better yet, information fluent. To maximize student learning and success in IDS 2891, librarians are embedding in every section of the course.



Jane Charles
Faculty Librarian and Professor
Learning Assessment Coordinator

How exactly do librarians “embed” in a course, and specifically, in IDS 2891? First, librarians are assigned course sections. Next, they collaborate with classroom faculty to provide scaffolded instruction on research concepts and practices throughout the semester. The librarian visits the class multiple times to instruct and to provide feedback and support. In addition, students are required to schedule individual research consultations with their class librarian. Together, CREATIVE Capstone faculty and librarians guide students through the process of planning, creating, and executing their research projects. This pedagogical approach facilitates the development of more meaningful relationships among students, classroom faculty, and librarians, and enhances students’ ability to holistically apply research concepts and practices.



**CREATIVE
CONNECTIONS**

What does all this have to do with assessment? Measuring the effectiveness of the embedded component of CREATIVE Capstone is imperative. Librarians want to know what works, what doesn't, and how we can improve. Students in IDS 2891 take two library surveys: One at the beginning of the semester and one at the end. The survey asks students to self-assess their understanding and application of the research process, from identifying topics, conducting background research, and using a variety of media to incorporating both academic and non-academic sources into their work, and redesigning research projects. Students are also asked if, and to what degree they find research to be challenging. The exit survey includes an additional question regarding what students learned from the class librarian that was most helpful to them.

Stay tuned If this intrigues you. The data will soon be flowing.

Spotlight on LAC Coordinator, Professor Rushell Hopkins



Rushell Hopkins
Professor, Computer Science
Learning Assessment Coordinator

Team AASPIRE leader, Dr. Joe van Gaalen, Assistant Vice President of Institutional Research, Assessment, and Effectiveness for FSW, sat down with one of the College's Learning Assessment Coordinators, Rushell Hopkins.

Professor Hopkins is Professor and Learning Assessment Coordinator in the Department of Computer Science.

What is the first thing that comes to your mind about what you learned since joining FSW's Learning Assessment Committee?

Pretty much how much more I need to learn. So, yeah, that I know nothing. I think, honestly, everything I thought I knew, I did not know. I have a long road ahead of me learning what it takes to get good assessments for the department.

This is an eye opener.

What do you feel is most important about assessment in FSW, specific to your department?

Um, that's a good one. I think really, the pre-tests and post-tests are really not always the greatest assessment tools, but I feel like in computer science they can be among the best. A lot of our classes have certifications, and so being able to pass this certified sort of assessment, can be a good practice. It is good to see the student's basic level at the beginning, and then where they are when they are ready to go after their certifications. Are we getting these students ready in the way that we think we are getting them ready? I think these pre-tests post-tests that we have planned are really going to be good for our department. I'm excited.

What is one thing that has helped you along the way in assessment?

Mary Myers and Joe van Gaalen. I think it is very difficult to jump into assessment as a new person. Having those people to give you the background and wittle it down and make more sense of it as I'm listening to all the action in assessment meetings. Mentorship is huge. And I think Team AASPIRE being so available is critical. That support gives me a good baseline for the journey of assessment I'm going to be on. The ability to have these folks so available is critical.

What is one thing you wish you had more of with regard to assessment now as a LAC?

Time. Time and I think that it takes more than one person per department. It would be nice to have someone else doing it with me in my department in terms of discussions. I am very specific about what I teach. We all in our department have very different fields, so it is harder to get a baseline for assessment in these different areas so having those different people participating more in LAC would be good. I can assess in my classes great, but with those other fields it becomes tricky. You have to get a picture of the whole computer science department, and having that support group is important. I think this new training course is going to be great because it'll get more people to be able to talk to me about assessment.

What is one thing you want to share about you to FSW as a LAC?

I love FSW. I have an absolute passion for the school. I was a student, and then I was an assistant, and then I was an adjunct, and then a full-time faculty member. I have a lot of loyalty to this school and I'm very lucky in my department that I can see the great things coming for this place, too. I just want to do as much as I can to make FSW an even better school. I think understanding assessment and how to use it to see that we are meeting our goals and getting better every day.

IT IS THE TIME OF YEAR FOR THE LEARNING
ASSESSMENT COMMITTEE TO WISH EVERYONE

HAPPY HOLIDATA

MAY GOOD CHEER BE ALIGNED WITH PEACEFUL REST
TO RECHARGE YOU FOR A DATA-FILLED NEW YEAR

JENNIFER SUMMARY, COMMITTEE CHAIR

D'ARIEL BARNARD, DOLORES BATIATO,
KRISSEY CABRAL, MEGHAN CARLSON,
JANE CHARLES, TINA CHURCHILL,
MARY CONWELL, TOM DONALDSON,
JESSICA GODWIN, MONIQUE HARRINGTON,
RENEE HESTER, RUSHELL HOPKINS, BILL
KELVIN, MARIUS COMAN, FERNANDO MAYORAL,
CARA MINARDI-POWER, COLLEEN MOORE,
KRISTI MORAN, JENNIFER PATTERSON,
CAROLINE SEEFCHAK, ERIC SEELAU,
TAMI SUCH, AMY TROGAN, JOE VAN GAALEN,
RICHARD WORCH, TERRY ZAMOR



Learning Assessment Committee 2022-2023

Member	Department or Division	Role
Summary, Jennifer	Communication Studies	Committee Chairperson
Barnard, D'ariel	AASPIRE	Ex-officio
Batiato, Dolores	Business	General Member
Cabral, Krissy	Crime Scene Technology	Coordinator
Carlson, Meghan	Mathematics	General Member
Charles, Jane	Libraries	Coordinator
Churchill, Tina	Mathematics	General Member
Conwell, Mary	Paralegal, Arch., Const., Engineering	Coordinator
Donaldson, Tom	Social Sciences	General Member
Godwin, Jessica	AASPIRE	Observer
Harrington, Monique	Humanities	Coordinator
Hester, Renee	Academic Success	Coordinator
Hopkins, Rushell	Computer Technology	Coordinator
Kelvin, Bill	Communication Studies	Coordinator
Marius Coman	Biology/Chemistry/Physics	Coordinator
Mayoral, Fernando	Foreign Language	Coordinator
Minardi-Power, Cara	English	Coordinator
Moore, Colleen	Health Professions	Coordinator
Moran, Kristi	Mathematics	Coordinator
Patterson, Jennifer	Accounting, Bus., Management	Coordinator
Seefchak, Caroline	Education	Coordinator
Seelau, Eric	Social Sciences	Coordinator
Such, Tami	Dean, Health Sciences	Ex-officio
Trogan, Amy	English	General Member
van Gaalen, Joseph	A.V.P., Team ASSPIRE	Ex-officio
Worch, Richard	Criminal Justice/Public Admin.	Coordinator
Zamor, Terry	Mathematics	General Member

Florida SouthWestern State College, an equal access institution, prohibits discrimination in its employment, programs and activities based on race, sex, gender identity, age, color, religion, national origin, ethnicity, disability, pregnancy, sexual orientation, marital status, genetic information or veteran status. Questions pertaining to educational equity, equal access or equal opportunity should be addressed to the College's Title IX Coordinator/Equity Officer: Angie Snyder; Room A-106A; 8099 College Parkway SW, Fort Myers, FL 33919; (239) 489-9051; equity@fsw.edu.

